

Camsense AI for Education: The Intelligent Campus Blueprint

Turning existing CCTV into
proactive student safety, access,
and operational intelligence.



THE REACTIVE CAMPUS (STATUS QUO)



- Security teams cannot continuously watch every gate, corridor, and playground.
- Manual incident review after bullying, intrusions, or lost items is painfully slow.
- Accountability for student, visitor, and vehicle movement is entirely retroactive.

THE INTELLIGENT CAMPUS (CAMSENSE)



- Existing compatible CCTV/IP/NVR feeds are upgraded with a digital brain.
- Detection of security, safety, and operational exceptions happens in real time.
- Immediate visibility into crowds, transport, and facilities without replacing infrastructure.

CAMSENSE TRANSFORMATION JOURNEY: FROM REACTIVE TO INTELLIGENT



STEP 1

Connect Existing Infrastructure

Link compatible CCTV, IP, NVR, or RTSP camera feeds. No full camera replacement required.

STEP 2

Configure The Edge AI Layer

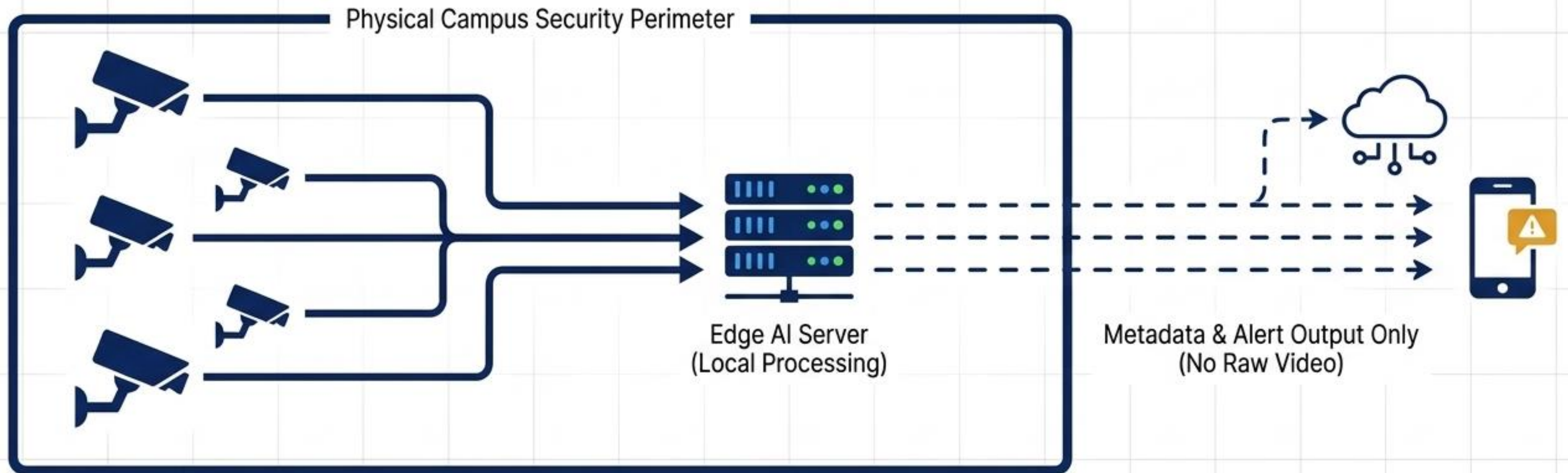
Apply no-code AI rules. Set up campus zones, operational schedules, alert thresholds, and escalation paths.

STEP 3

Generate Active Intelligence

Review incidents through custom dashboards, evidence clips, searchable event histories, and daily/weekly management reports.

Architecture & Privacy by Design



Local Processing for Maximum Privacy

Edge/on-premise AI boxes process video streams locally. Cloud is only used for sync and notifications, minimizing bandwidth and keeping video inside the campus network.

Strict Zone Policies

Surveillance is strictly for declared safety purposes. Absolutely zero AI monitoring in private/sensitive spaces (washrooms, changing rooms, dorm rooms, infirmaries).

Human-in-the-Loop Safeguards

AI alerts support trained staff review; they do not replace human judgment. Backed by RBAC (Role-Based Access Control) and secure audit logs.

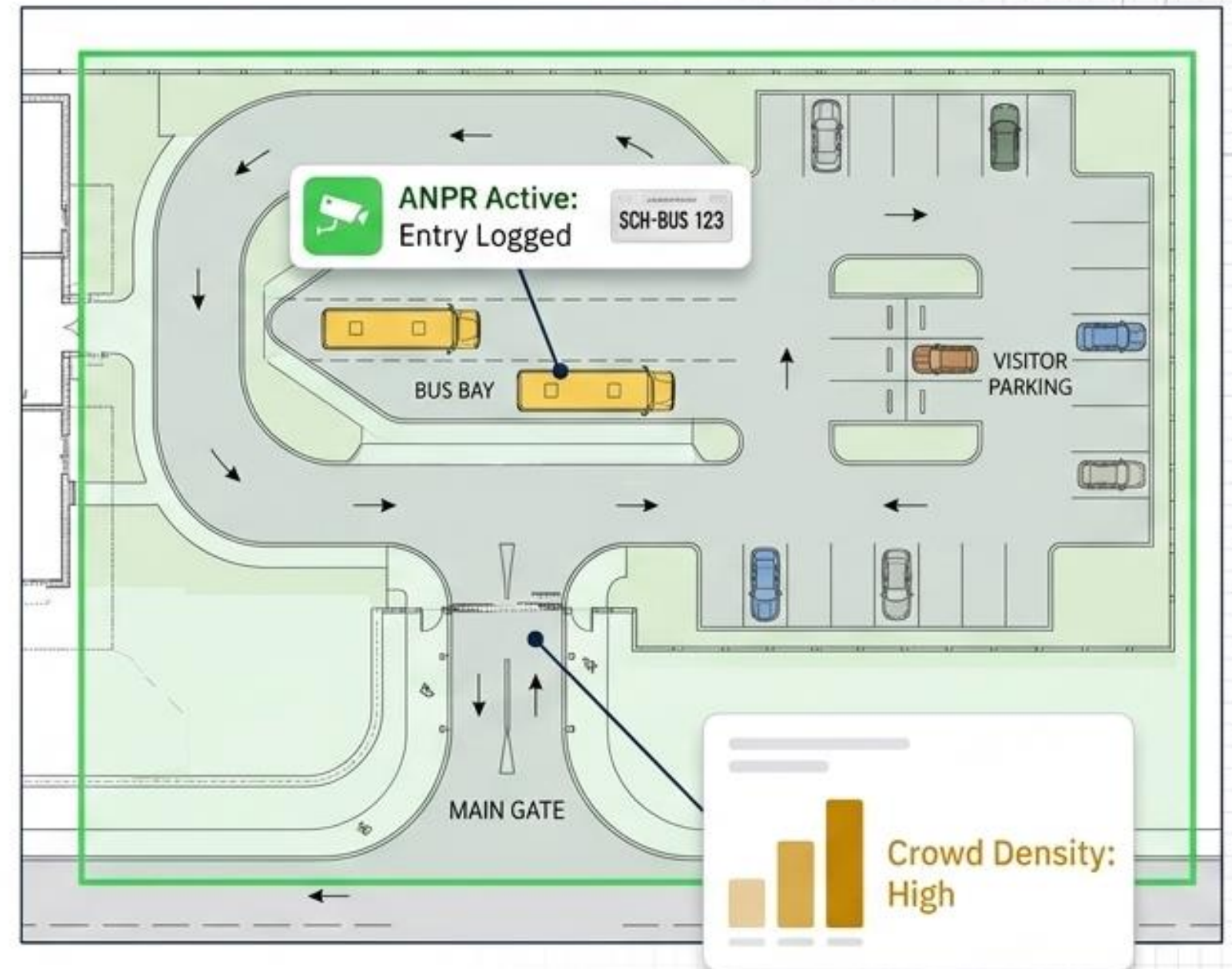
Layer 1 - Perimeter, Gates & Transport

Gates & Reception

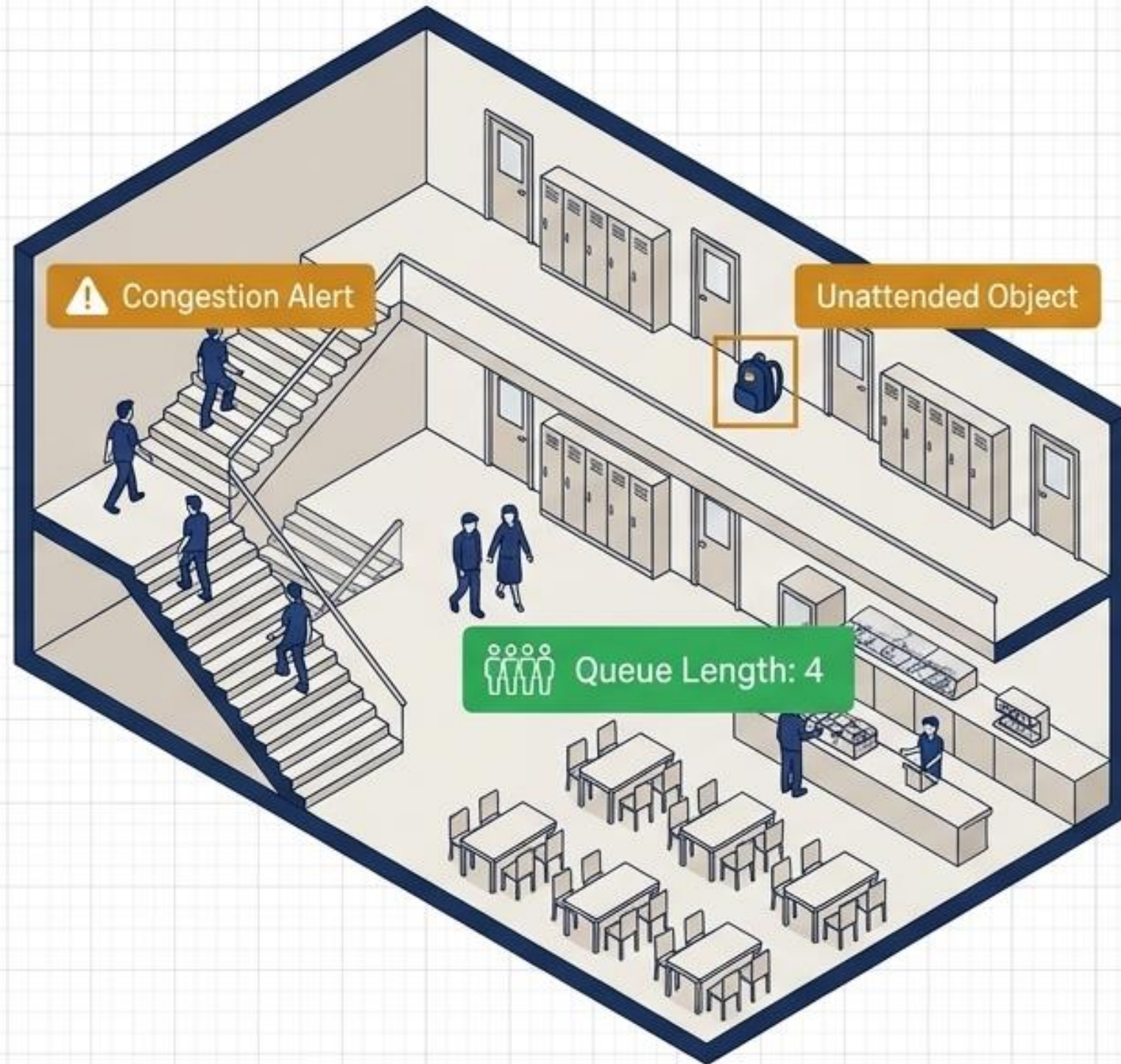
- Visitor queue/crowd alerts, parent pickup dispersal monitoring, and dwell-time/loitering detection.

Transport & Parking

- ANPR (Automatic Number Plate Recognition) for entry/exit logs.
- Categorization of school buses, staff vehicles, and unknown visitors.
- Bus bay pickup/drop monitoring and unauthorized after-hours vehicle alerts.



Layer 2 - Academic Blocks & Common Areas



Corridors & Staircases

- Crowd, running, and congestion alerts to prevent trampling or blockages.
- Emergency-exit obstruction detection.

Playgrounds & Cafeterias

- Occupancy and crowd-density visibility.
- Queue alerts at canteens and tuck shops.
- Loitering or restricted-time movement alerts around rear zones.

Common Areas (Libraries/Auditoriums)

- Unattended object detection and object-removal alerts.
- After-hours movement in closed academic blocks.
- Custom validation available for aggressive action/bullying detection.

Layer 3 - Restricted & Sensitive Zones

Hostels & Dormitories

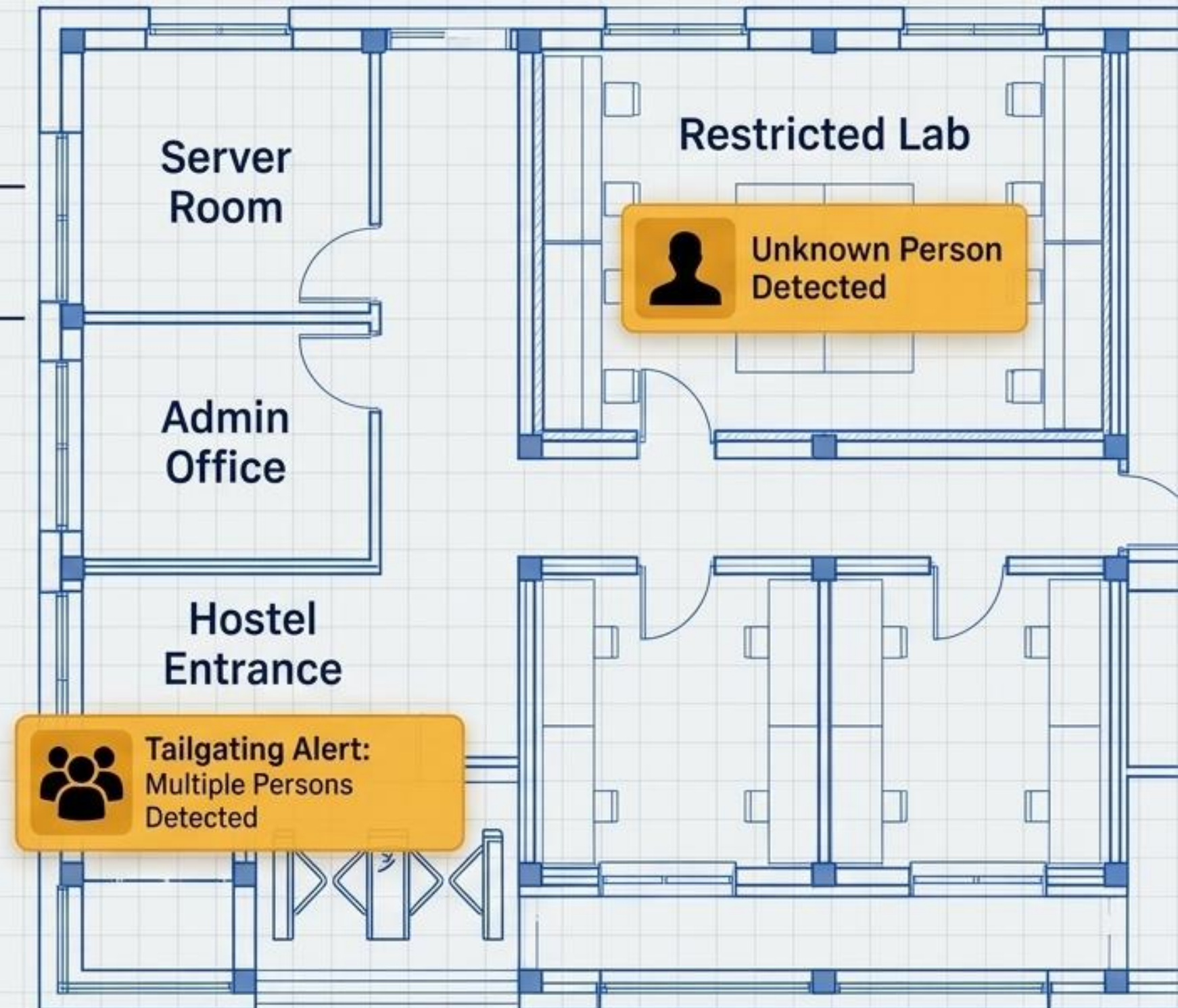
- Authorized-person monitoring for hostel entry and common corridors.
- Unknown-person and after-hours movement alerts.
- (Strictly excludes all private dorm rooms and washrooms).

Labs, Server Rooms & Admin

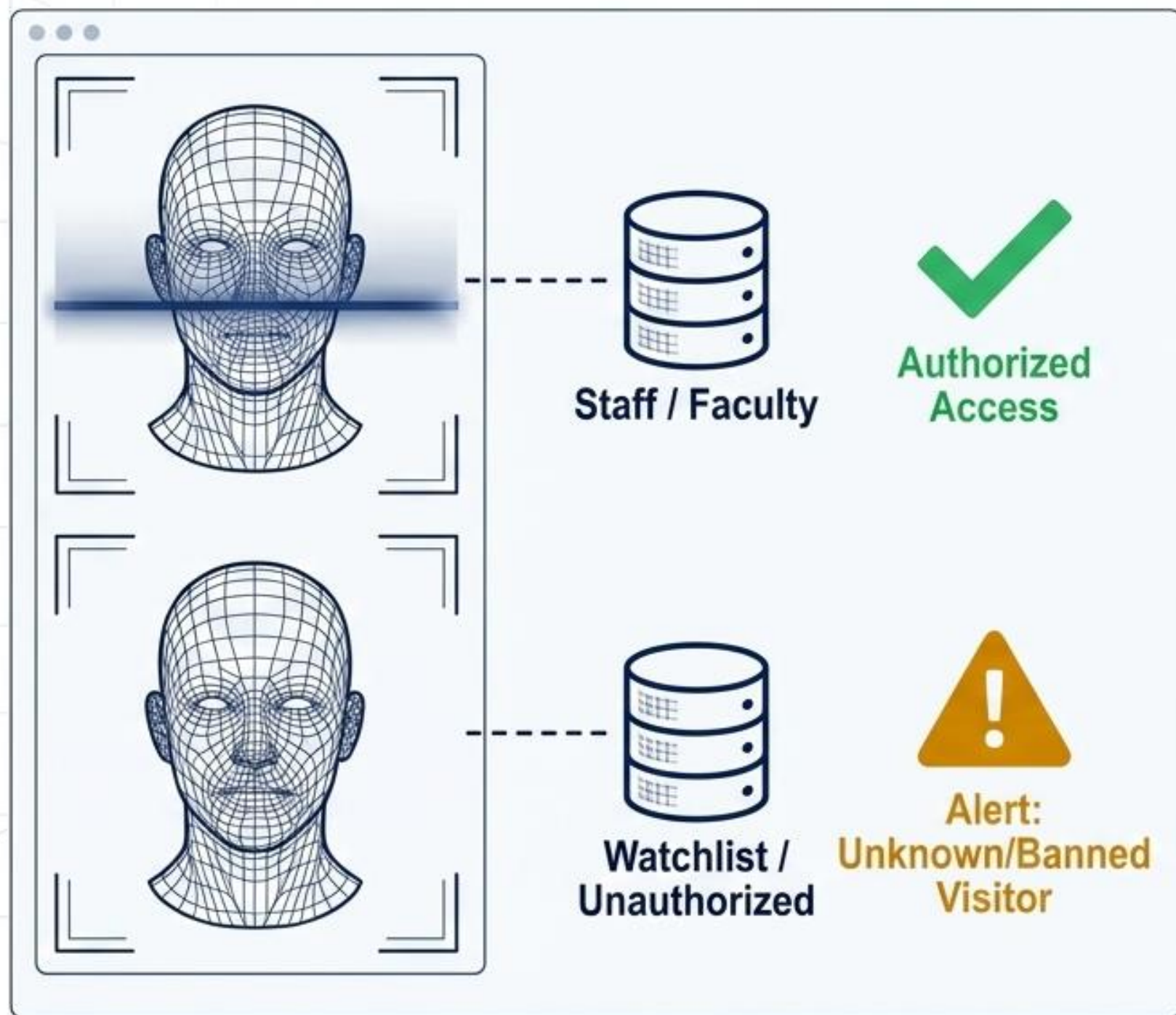
- After-hours intrusion alerts.
- Unattended object detection in sensitive records areas.

Access Control Support

- Tailgating-ready monitoring at badge doors and turnstiles.
- Continuous evidence history for wardens and campus security review.



The Identity Engine: Responsible Intelligence



Authorized Workflows

- Staff entry/exit logs at approved gates.
- Principal, senior staff, and admin-role verification for restricted zones.

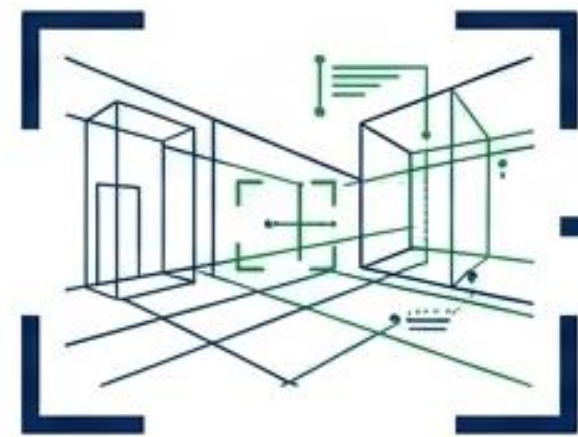
Watchlists & Security

- Immediate alerts for banned visitors, terminated staff, or security-sensitive persons.
- Unknown-person alerts strictly in restricted administrative or technical zones.

Governance Prerequisite

- Explicit policy, consent/enrollment governance, legal review, and parent/school approvals are mandatory before enabling any biometric matching.

The Escalation Engine



1. Real-Time Detection

Event alert generated with camera name, zone, timestamp, and severity level



2. Fast Evidence Review

Snapshot or evidence clip is instantly attached for authorized user review



3. Searchable History

Database enables fast search by person, vehicle, camera, zone, date, or event type



4. Traceable Reporting

Automated daily/weekly reports distributed to principals, wardens, and management via role-based access

SYNTHESIS: The 40-Camera Master Blueprint

Main Gate / Security (4)

Face-ready entry, ANPR, visitor logs.

Reception / Admission (4)

Visitor recognition, queue, loitering.

Corridors / Staircases (8)

Crowd, obstruction, after-hours movement.

Labs / Admin / Server (6)

Restricted-zone, authorized access.

Hostel Entry Zones (5)

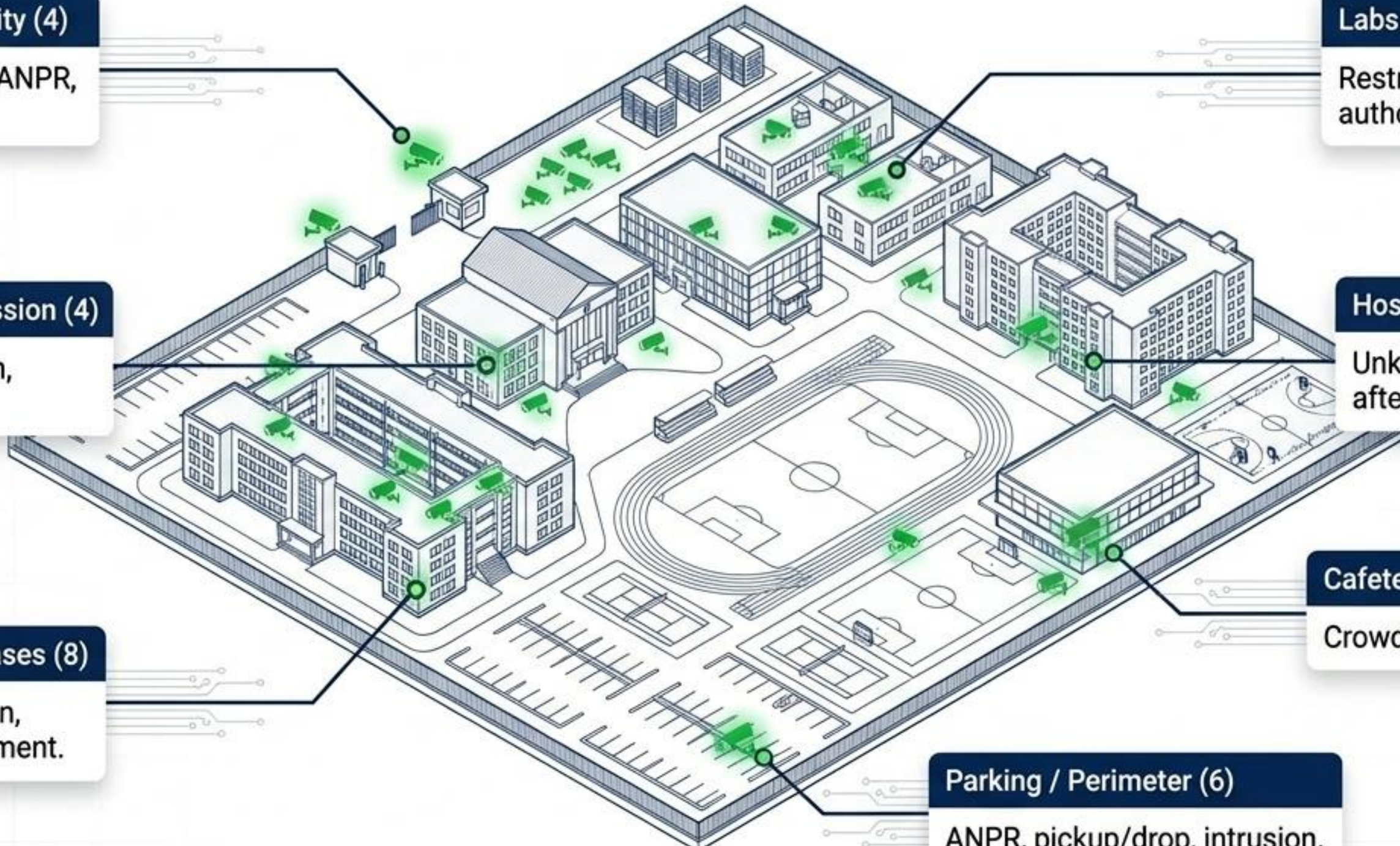
Unknown-person, after-hours movement.

Cafeteria / Playground (7)

Crowd, queue, occupancy.

Parking / Perimeter (6)

ANPR, pickup/drop, intrusion.



Business Impact & ROI



Fostering Parent Trust

Unprecedented visibility into hostels, corridors, and gates ensures a safer student environment and a stronger institutional reputation.



Staff & Vendor Accountability

Reliable tracking of staff, visitors, drivers, and vehicles enforces strict operational discipline across the campus.



Operational Speed

Drastically reduced manual CCTV review time allows administrative and security teams to respond to incidents faster.



Scalable Governance

A unified reporting system that seamlessly scales across multi-building campuses, schools, colleges, and transport networks.

The Commercial Model



Ongoing Support

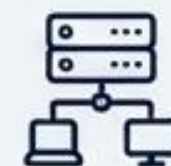
Annual AMC (Annual Maintenance Contract) applies only from Year 2 onwards, ensuring predictable long-term costs.



Transparent Licensing

A one-time software license based purely on scoped cameras and approved use cases.

No hidden, recurring heavy SaaS fees.



Hardware at Cost

Optional Edge AI hardware, servers, GPUs, storage, and networking provided entirely at actuals if required.

Custom Scoping

Final quotes are provided only after a full camera list review, site survey, and strict privacy/compliance validation.

The 45-Day Pilot Plan

Start with 10–20 priority cameras to validate value with zero disruption.

