

**CAMSENSE**

# The Illuminated Facility

Turn existing CCTV into real-time safety, security, and operations intelligence.

**AI detects events, not just video.**

Authorized Vehicle



# The Limits of the Rearview Mirror



## Late Discovery

Theft, material movement, and after-hours access are often discovered hours or days too late.



## Daily Safety Risk

Loading docks, aisles, and emergency routes create constant, unmonitored daily safety risks.



## Manual Monitoring Gaps




Manual CCTV monitoring is biologically inconsistent, degrading across long shifts and multiple screens.



## Lack of Accountability

Owners need measurable compliance, irrefutable evidence, and strict accountability—not just terabytes of passive video storage.

# From Passive Storage to Proactive Intelligence

	Traditional CCTV	Camsense AI
Timeline	Useful only after an incident	 Useful while the event is happening
Detection	Relying on manual human observation	 Automated 24/7 AI event detection
Output	Reactive video storage	 Real-time alerts, dashboards, and evidence clips

**Most systems wait for a report. Camsense generates the alert.**

# The Intelligence Pipeline

Existing IP/RTSP/NVR camera feeds become intelligent event sources instantly.



## 1. Input (CCTV / IP / NVR)

Connect existing, compatible camera infrastructure. No need to rip and replace hardware.

## 2. Process (Camsense Edge AI)

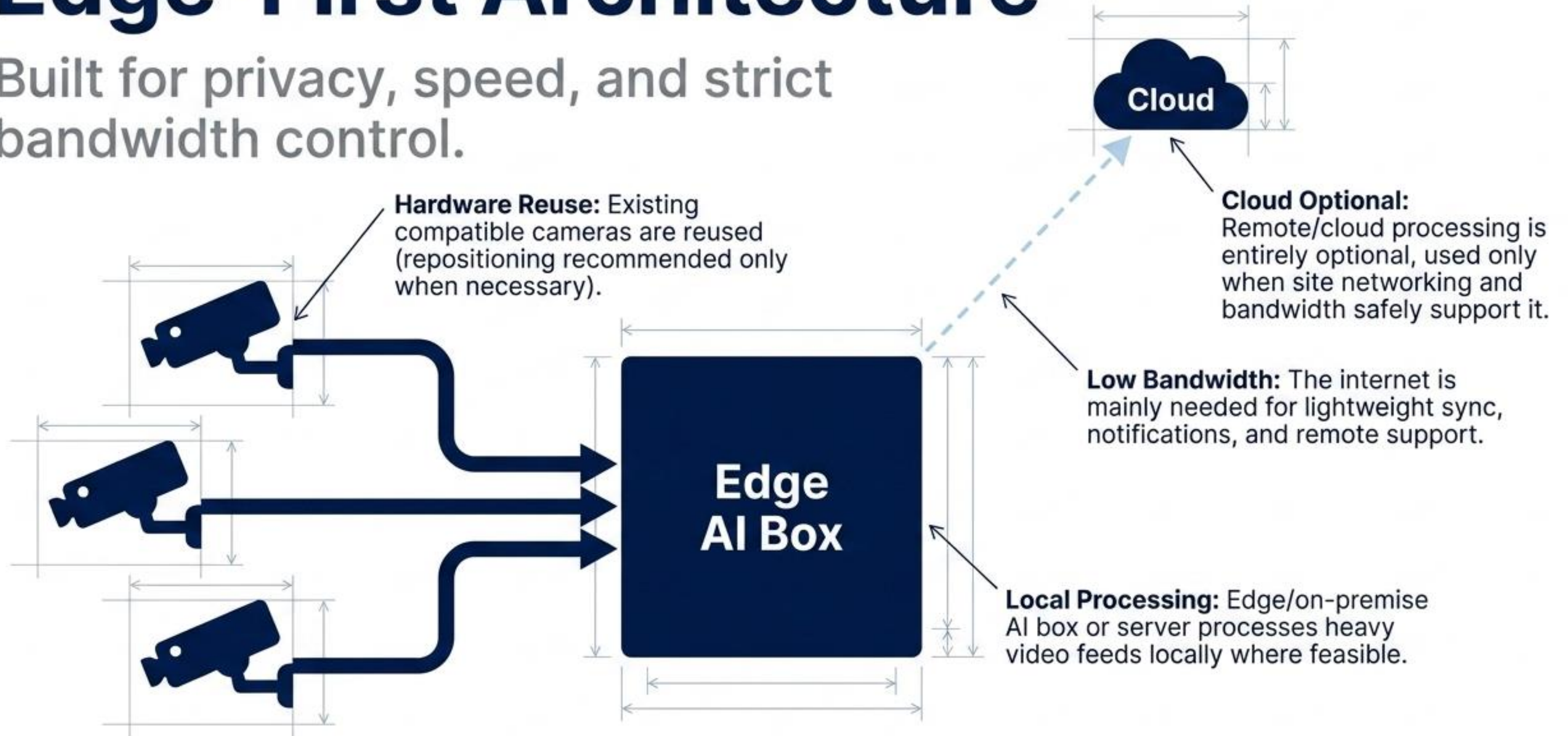
AI analyzes the video feed in real-time. Configured with no-code zones, rules, and schedules.

## 3. Act (Alerts & Reports)

System triggers dashboard alerts, evidence clips, and automated escalation workflows.

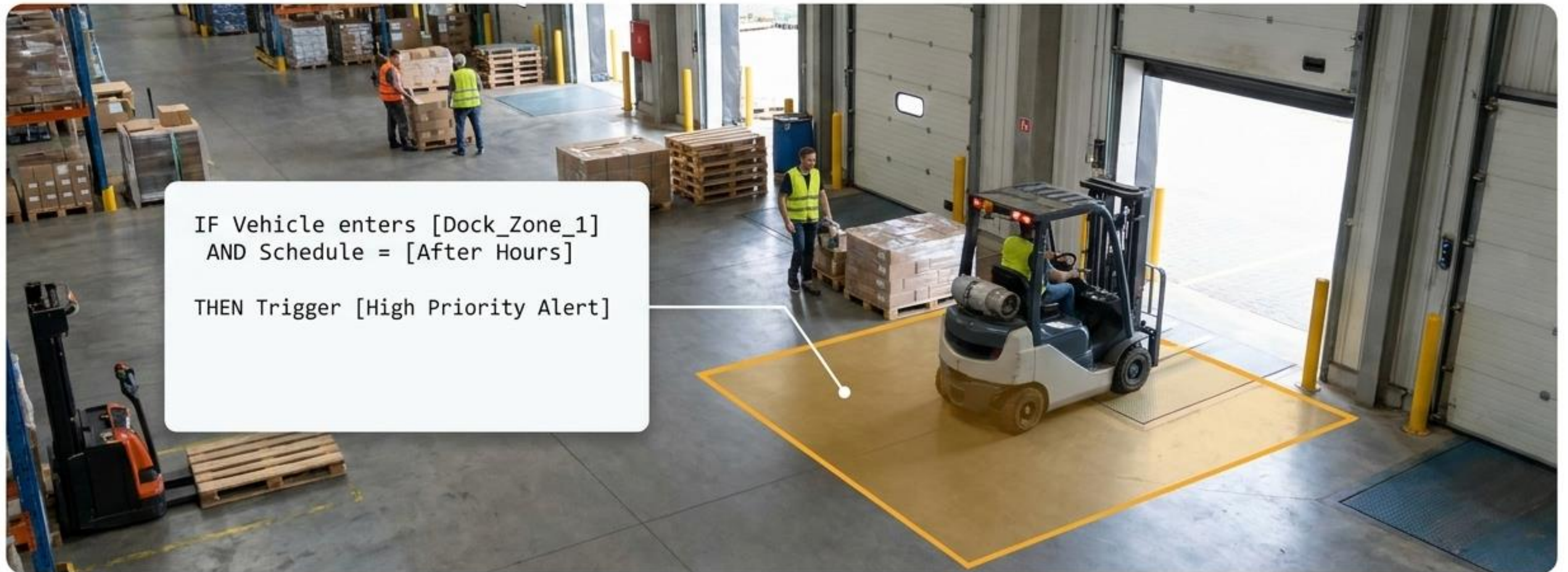
# Edge-First Architecture

Built for privacy, speed, and strict bandwidth control.



# No-Code Rule Configuration

Define safety, security, and operations events in real time without writing a line of code.



Effortlessly configure custom zones, complex rules, operational schedules, and specific alert thresholds for every individual camera view.

# Securing the Perimeter & Access Points

A practical AI layer for external critical zones.

## Main Gate & Vehicle Entry/Exit



Configured for entry-exit tracking, crowding/queue alerts, vehicle logs, and optional ANPR (Automatic Number Plate Recognition).

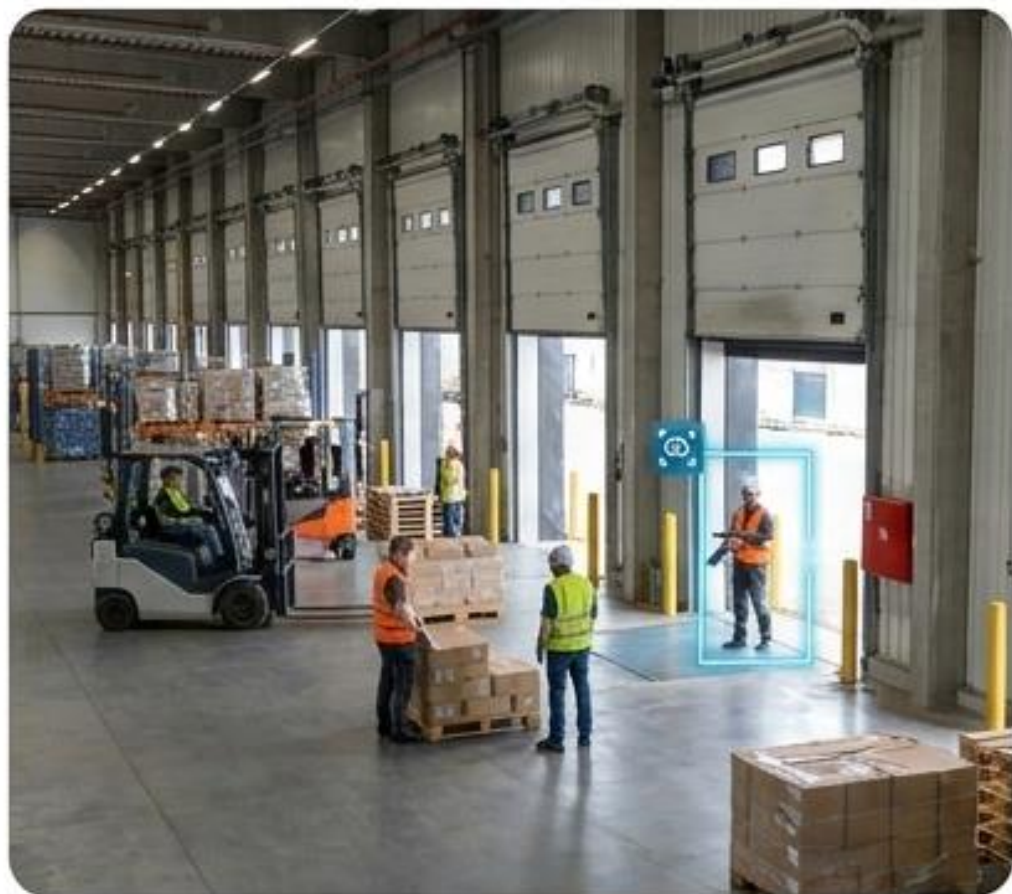
## Perimeter Walls & Blind Spots



Configured per camera view to detect unauthorized access, perimeter breaches, and after-hours movement in restricted exterior zones.

# Monitoring Operations, Safety & Inventory

A practical AI layer for internal critical zones.



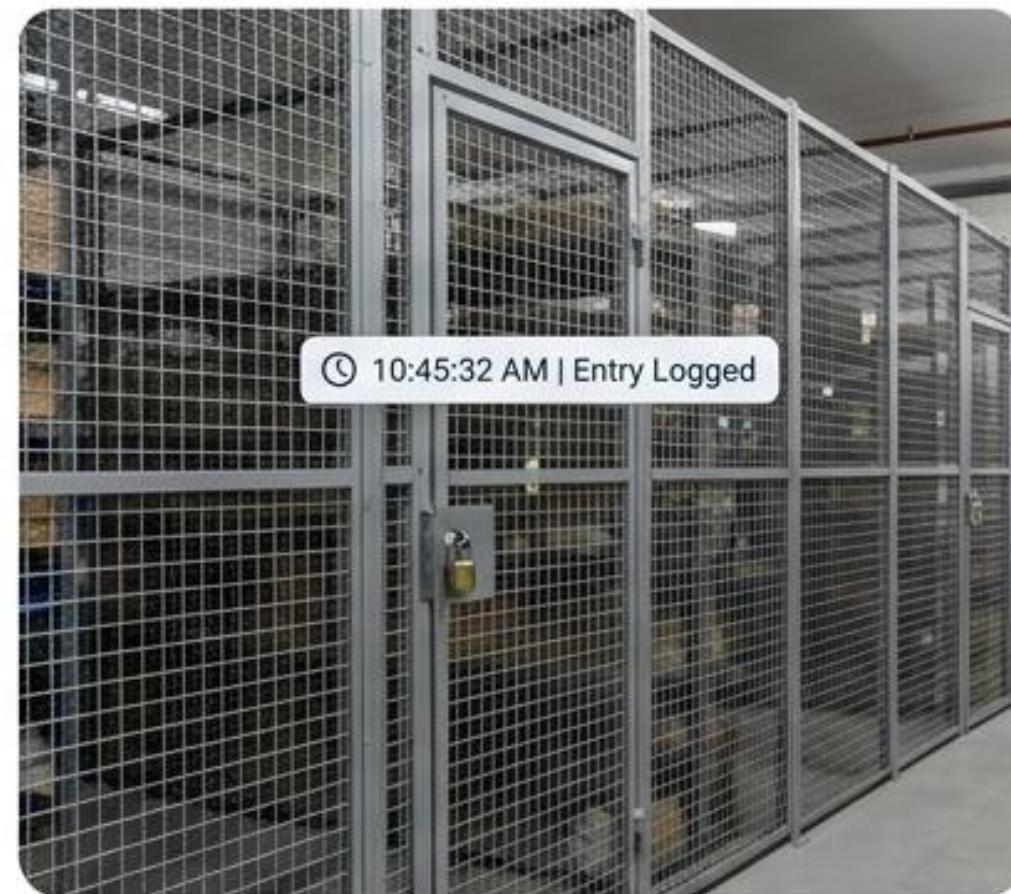
## Loading Docks & Dispatch Bays

Detecting PPE non-compliance, dangerous dock congestion, and aisle obstruction.



## Aisles, Pallet Racks & Material Zones

Monitoring safe material movement, blocked exits, and unsafe machinery interactions.



## High-Value Inventory / Restricted Stores

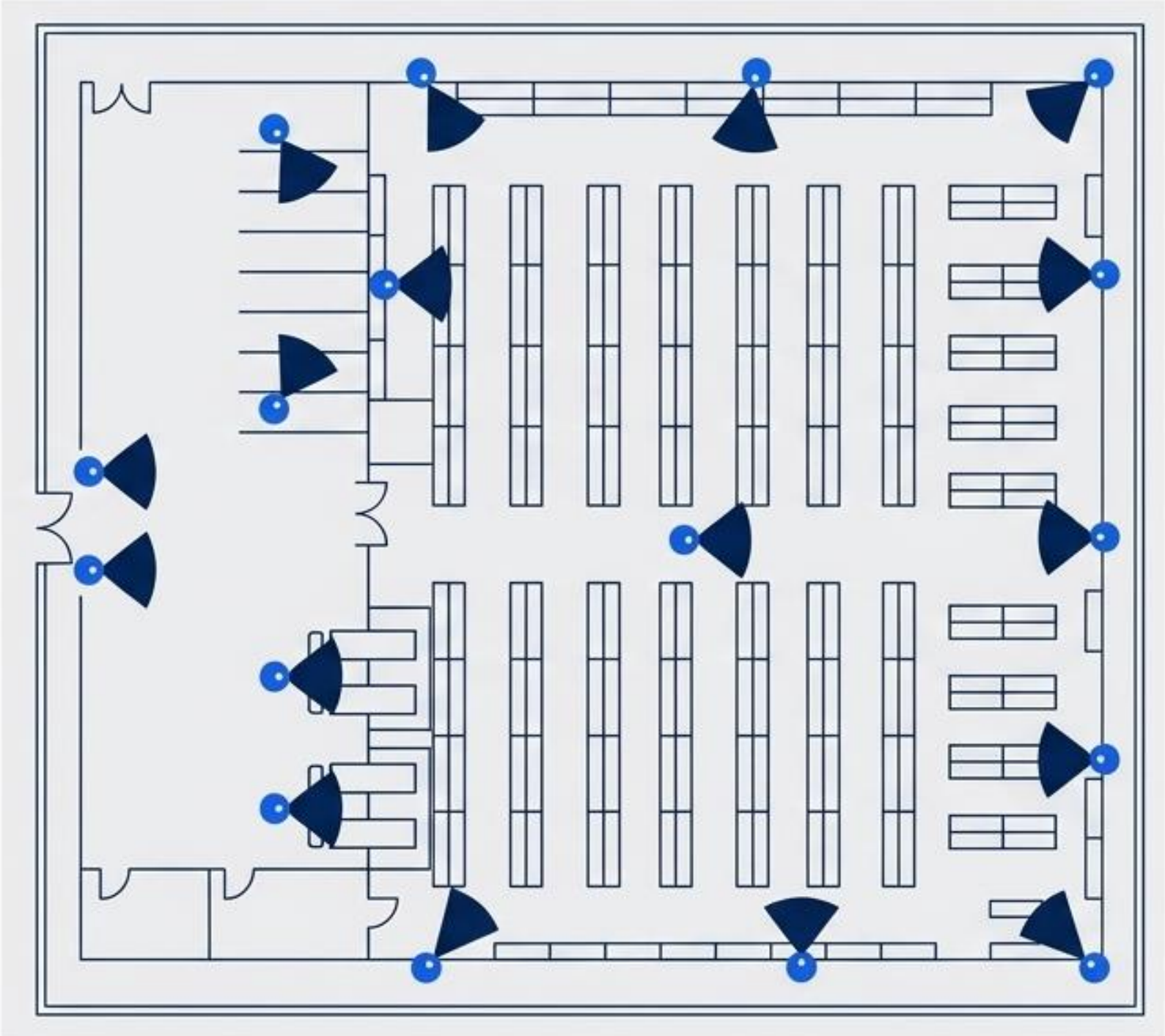
Tracking unauthorized personnel, loitering, and schedule-based escalation for high-value goods.

# The 20-Camera Deployment Blueprint

Indicative mapping for a standard facility (final design adapts to site layout).

Zone	Cameras	Primary Use Cases
Main Gate / Security	2	Entry-exit, crowding, vehicle logs, ANPR
Truck Holding / Parking	2	Vehicle queue, wrong parking, after-hours movement
Loading Docks / Dispatch	4	Dock activity, PPE, congestion, obstruction

*Additional 12 cameras deployed across aisles, perimeter, and high-value stores for full coverage.*



# Actionable Intelligence Delivery

How security, EHS, and operations teams consume the data.



## Real-Time Alerts

Instant event notifications tagged with camera, exact zone, and timestamp.



## Evidence Clips

Auto-generated snapshot and video clips for fast review, audit, insurance, and vendor discussions.



## Searchable History

Query past events by date, camera, specific zone, and event type.



## Automated Reporting

Shift-wise, daily, or weekly reports delivered directly to management.



## Role-Based Access

Custom permission levels for owners, facility managers, guards, and EHS officers.

# The Unified Business Impact

A practical return driven by fewer missed events and faster management action.



---

Scalable governance across a single site or multi-warehouse operations from one intelligent layer.

# A Frictionless Commercial Approach

An ownership-friendly model designed for predictable ROI.

## One-Time License

Per-camera basis. You only pay for the intelligence you deploy.



## Annual AMC

Annual Maintenance Contract for predictable ongoing support, updates, and system health monitoring.

**Upgrade your infrastructure today.**